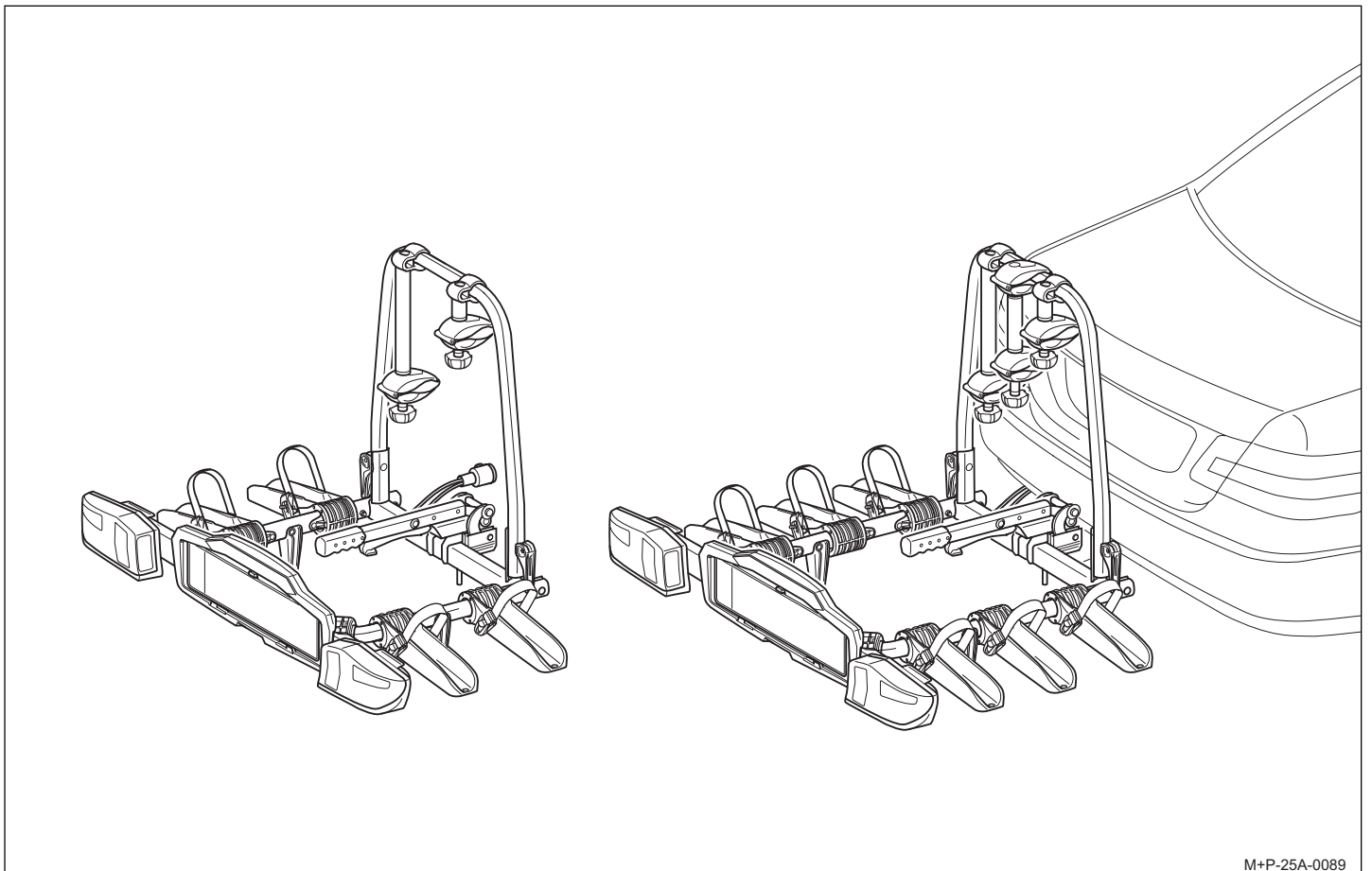


Trailer hitch bicycle rack

- Uebler F22, for 2 bicycles, order no. 15720
- Uebler F32, for 3 bicycles, order no. 15730

Mounting and Operating Instructions



Ⓓ

ⒼⒷ Trailer hitch bicycle rack

Page 1

Ⓕ

Ⓔ

Ⓐ

Ⓟ

Ⓟ

Ⓒ

Uebler GmbH
Sandäcker 7
91301 Forchheim

Tel.: +49 (0)9191 7362-0
Fax: +49 (0)9191 7362-77
E-Mail: info@uebler.com
Internet: www.uebler.com

Stand: 04.2012



Dear customer,

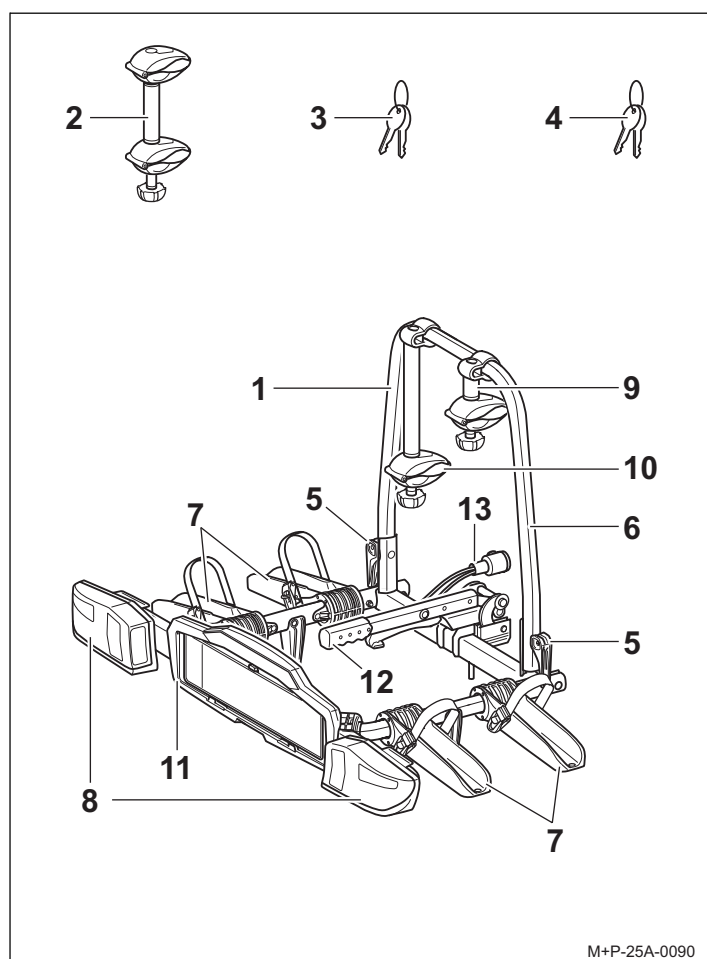
Thank you for choosing an UEBLER bicycle rack.

The operating steps and safety instructions described in these Mounting and Operating instructions must be adhered to. UEBLER shall not accept liability for damage resulting from the failure to do so.

Note:

This section describes and illustrates how to mount and operate the Uebler F22 bicycle rack. Proceed in a similar manner for the Uebler F32 bicycle rack.

Parts overview



Item no.

Hitch rack Uebler F22 for 2 bicycles
 Order no. 15720 (left hand drive)
 Order no. 15721 (right hand drive)
 Hitch rack Uebler F32 for 3 bicycles
 Order no. 15730 (left hand drive)
 Order no. 15731 (right hand drive)

EEC type approval number

e11*74/483*2007/15*6511

Scope of delivery

| Symbol | F22 | F32 |
|--------------------------|-----------------|-----------------|
| | Number of items | Number of items |
| 1 Bicycle rack | 1 | 1 |
| 2 Bracket, 3rd bicycle | - | 1 |
| 3 Key for clamping lever | 2 | 2 |
| 4 Key for bracket | 4 | 6 |

Notes:

The scope of delivery is subject to change.
 Have repairs or part replacements performed by a specialist.
 For safety reasons, Uebler recommends the use of original spare parts from your bike specialist only.

Part description

| Description | F22 | F32 |
|-----------------------------|-----------------|-----------------|
| | Number of items | Number of items |
| 5 Quick release clamp | 2 | 2 |
| 6 Rack frame | 1 | 1 |
| 7 Wheel rails | 4 | 6 |
| 8 Tail lamps | 2 | 2 |
| 9 Bracket, 1st bicycle | 1 | 1 |
| 10 Bracket, 2nd bicycle | 1 | 1 |
| 11 Number plate holder | 1 | 1 |
| 12 Clamping lever | 1 | 1 |
| 13 Plug for lighting system | 1 | 1 |

Technical data

| Rack weight | |
|---------------------------------|------------------|
| Uebler F22, for max. 2 bicycles | 26.5 lbs (12 kg) |
| Uebler F32, for max. 3 bicycles | 32 lbs (14.5 kg) |

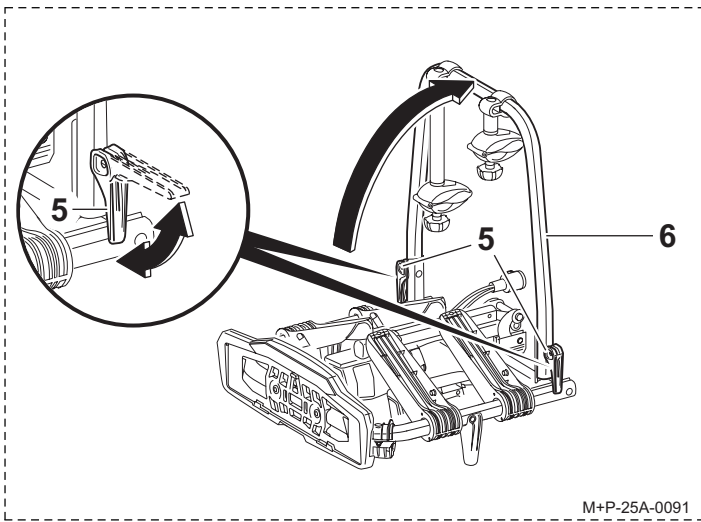
| Maximum load (load capacity) | |
|--|-------------------------------------|
| Uebler F22, from D-value ¹ 5.3 kN - min. tow bar load of 110 lbs (50 kg) | 83.5 lbs (38 kg) |
| Uebler F22, from D-value ¹ 6.7 kN - min. tow bar load of 110 lbs (50 kg) - min. tow bar load of 165 lbs (75 kg) | 83.5 lbs (38 kg) 132 lbs (60 kg) |
| Uebler F32, from D-value ¹ 5.3 kN | -- ² |
| Uebler F32, from D-value ¹ 6.7 kN - min. tow bar load of 110 lbs (50 kg) - min. tow bar load of 165 lbs (75 kg) | 78 lbs (35.5 kg) 119 lbs (54 kg) |

- ¹ See type label in the trailer hitch
- ² Not permissible

| Electricity supply | |
|---------------------------------|---------------|
| Uebler F22, for max. 2 bicycles | 13-pole, 12 V |
| Uebler F32, for max. 3 bicycles | 13-pole, 12 V |

| Maximum tube diameter of bicycle frames | |
|---|----------------------------|
| Round tube | 3 inch (80 mm) |
| Oval tube | 3 x 1.7 inch 80 x 45 mm |

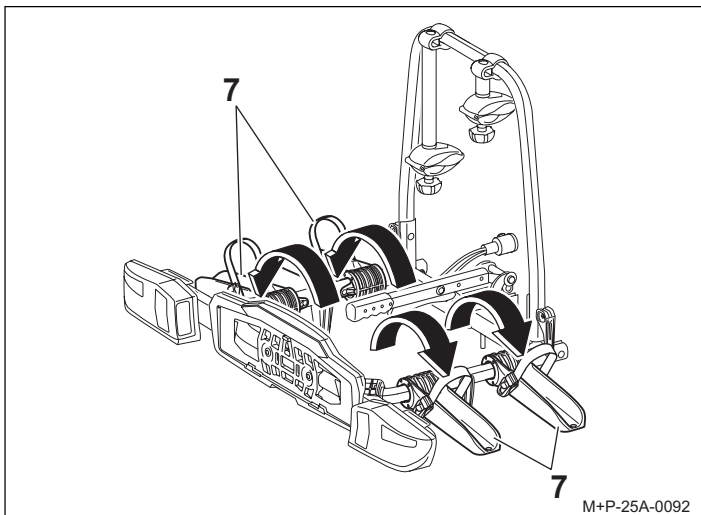
Folding open the bicycle rack



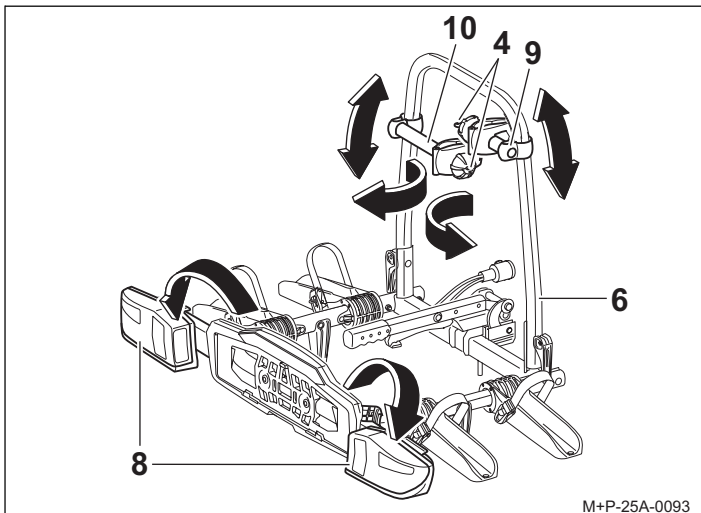
1. Open the quick release clamp (5).
2. Fold up the rack frame (6) and close the quick release clamp (5). If necessary, turn the quick release clamp (5) clockwise if the rack frame (6) is too loose.

Note:

If the quick release clamps (5) cannot be closed, turn anticlockwise.



3. Fold out the wheel rails (7) and engage.

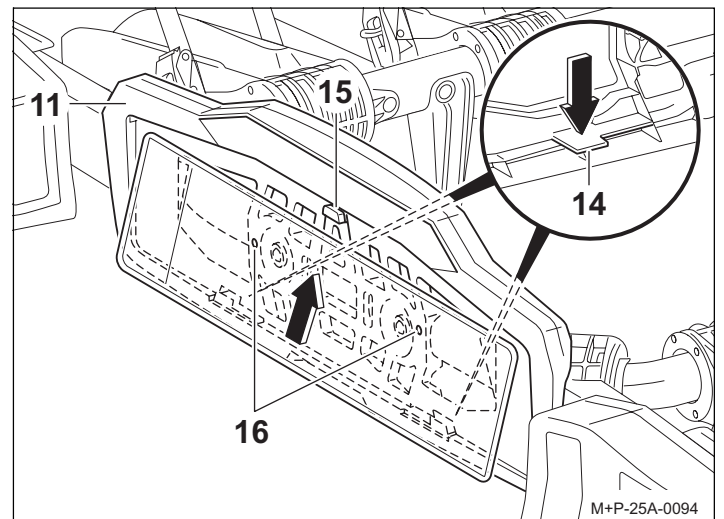


4. Fold out the tail lamps (8) and engage.

5. Unlock the brackets (9 and 10) with the key (4).
6. Swing the brackets (9 and 10) forward and slide along the track frame (6) into the required position.

Attention:

The plate number on the bicycle rack (1) must match the plate number of the vehicle and be clearly legible.



7. Press the bracket (14) down. Insert the number plate in the number plate holder (11), press up against the stoppers (15) and insert fully. Release the bracket (14) and check that it is positioned securely.

Note:

To insert higher number plates, press the stoppers (15) back and slide the plate fully into the number plate holder (11). For narrow number plates, use the drilling points (16) for attaching the plate.

Collapsing the bicycle rack

The bicycle rack (1) is collapsed in reverse order.

Note:

If you have adapted the position of the tail lamps (8) when using the bicycle rack (1), (see "Adjusting the lamps" page 11), then you must bring the tail lamps (8) back to their initial position before collapsing the bicycle rack (1). Proceed in the reverse order of that described in "Adjusting the lamps".

Attaching the bicycle rack to the vehicle

Attention:

The trailer hitch must be suitable for mounting a bicycle rack.

- D-value of the ball head (see "Technical data" page 7)
- Material of trailer hitch at least St 52-3 (see type label on trailer hitch)

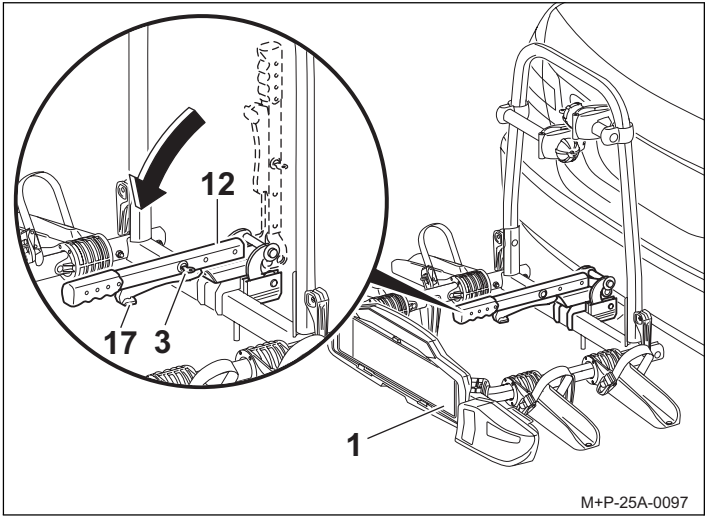
The ball head must be cleaned and degreased prior to mounting.

Attention:

When the bicycle rack is attached to the vehicle, the tail lamps must always be folded out.
The bicycle rack is not permitted to be used with the tail lamps folded in. The lighting system must be checked to ensure it is correctly positioned and working properly before every trip.

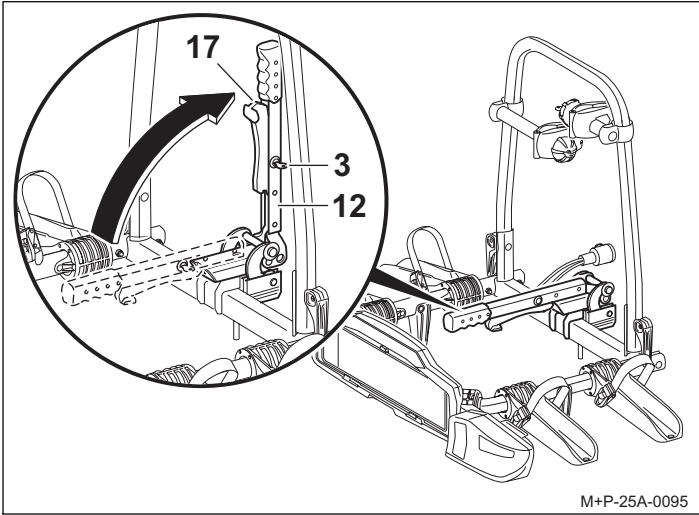
Attention:

When driving through entrances and passages, note that the vehicle dimensions have changed (width, height, depth). Exercise care when reversing.



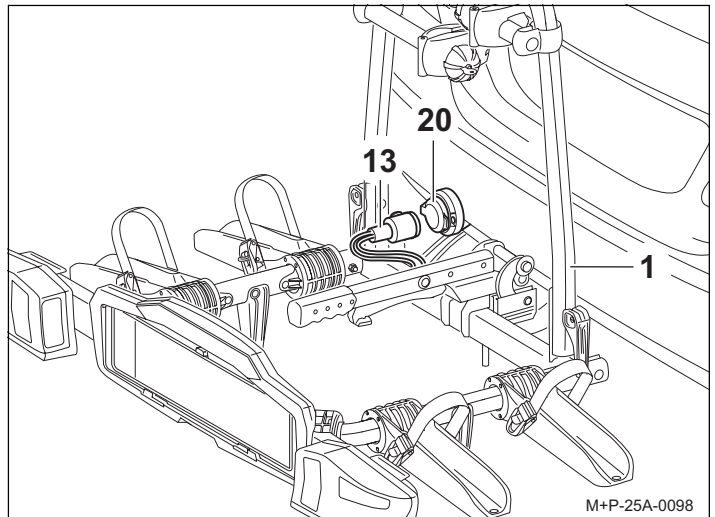
M+P-25A-0097

4. Align the bicycle rack (1) parallel to the bumper and move the clamping lever (12) down so that the lever (17) engages.
5. Lock the clamping lever (12) with the key (3). Pull out the key (3).
6. Jiggle the rack (1) to ensure it is seated firmly. If necessary, remove the bicycle rack (1) and reattach.



M+P-25A-0095

1. Unlock the clamping lever (12) with the key (3).
2. Press lever (17) and move clamping lever (12) up.

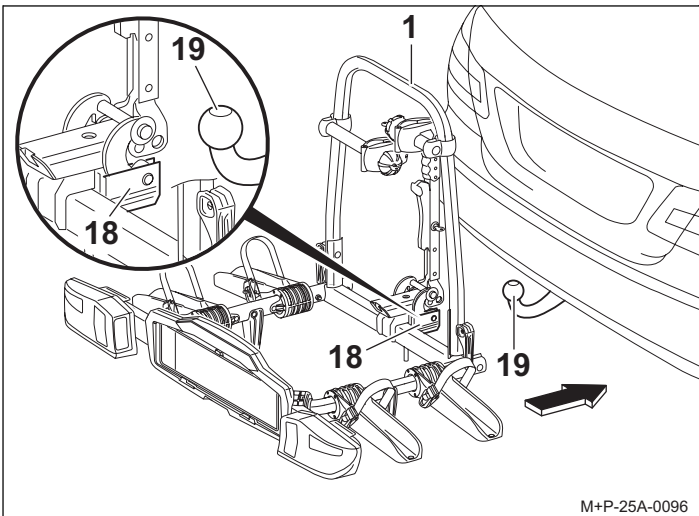


M+P-25A-0098

7. Remove plug (13) from the holder on the bicycle rack (1), plug into the socket (20) of the trailer coupling's electrical system, and turn clockwise as far as it will go.
8. Check the lighting system is working.

Removing the bicycle rack

The bicycle rack (1) is removed from the vehicle in reverse order.



M+P-25A-0096

3. Slide the support (18) horizontally onto the ball head (19) and secure bicycle rack (1) against tilting.

Mounting/removing bicycles

WARNING

The bicycle rack for the trailer hitch is only intended for transporting bicycles.

Only bicycles with a max. weight of 66 lbs (30 kg) each may be transported on the bicycle rack.

The maximum allowable load capacity of the bicycle rack, the tow bar load of the trailer hitch, the allowable total vehicle weight and the maximum allowable vehicle axle load (see vehicle owner's manual) must not be exceeded. If these instructions are not followed, the bicycle rack together with the mounted bicycles may come loose from the vehicle and cause injury to you or to other persons, or lead to an accident.

WARNING

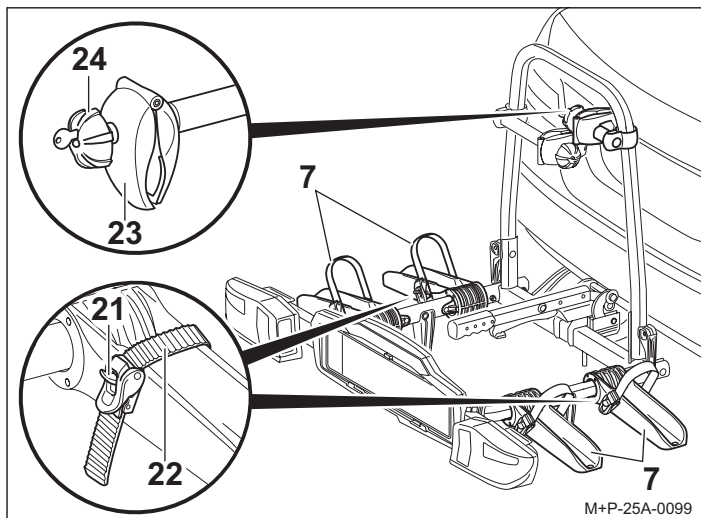
The bicycles must be mounted evenly and with a low centre of gravity on the bicycle rack. Each must be secured against falling off using a bracket on the bicycle frame and lashing straps on the front and rear wheels.

Before mounting, remove child seats and all loose parts, such as water bottles, saddlebags etc. from the bicycles and stow them away.

If this is not adhered to, the bicycles and/or loose parts could come loose from the vehicle during a trip and lead to an accident causing injury to others and property damage.

WARNING

Mount and remove the bicycles together with another person. Secure the bicycles against slipping off/tilting. There is a danger of injury.



1. Press the latch (21) and pull out the lashing straps (22).
2. Unscrew the clamps (23) with the rotary handle (24) until the tube diameter of the bicycle frame is reached.

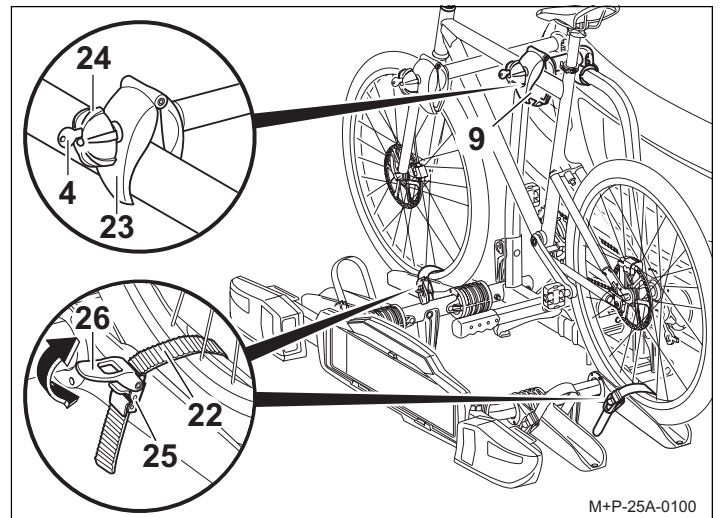
Attention:

Mount heavy bicycles close to the vehicle and light bicycles (e.g. children's bikes) farther out on the bicycle rack. Mount the first bicycle with the toothed gear wheel facing the vehicle.

3. Place the bicycle on the wheel rails (7) closest to the boot and secure against tilting.

Attention:

Only attach the bracket to the bicycle frame. Do not pinch components such as gear or brake cables. Faulty clamps must be replaced immediately.



4. Attach the bracket (9) at the suitable location on the bicycle. Tighten the clamp (23) with the rotary handle (24) and lock with the key (4). Pull out the key (4).
5. Pass the lashing strap (22) between two wheel spokes, thread into the buckles (25) and tighten (arrow) with the tensioning lever (26).

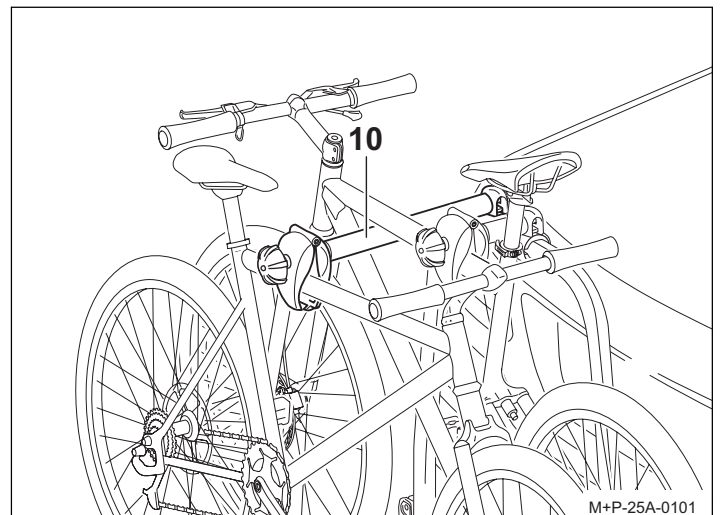
Note:

Tightening the lashing straps (22) places these under tension. To release this tension, press the latch (21), firmly if necessary.

Note:

The threaded screws on the bracket must be cleaned and greased at regular intervals to avoid the rotary handles getting stuck.

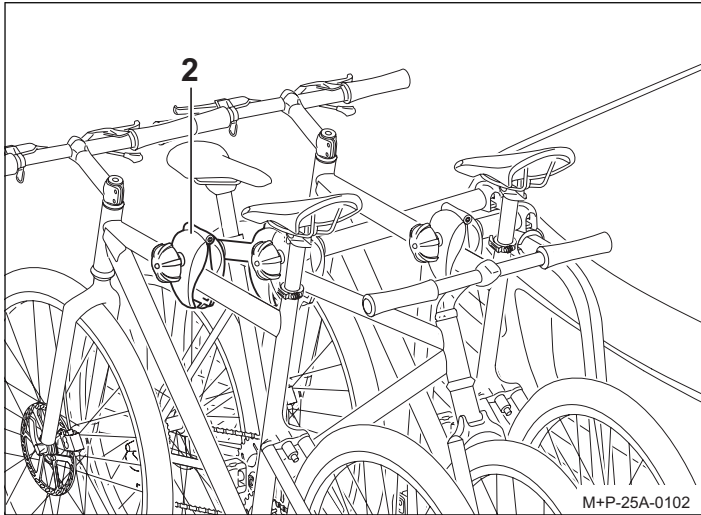
Mounting the second bicycle



The second bicycle is mounted in the same manner as the first. Note that the bicycles are mounted in opposite directions.

The second bicycle is attached using the long bracket (10).

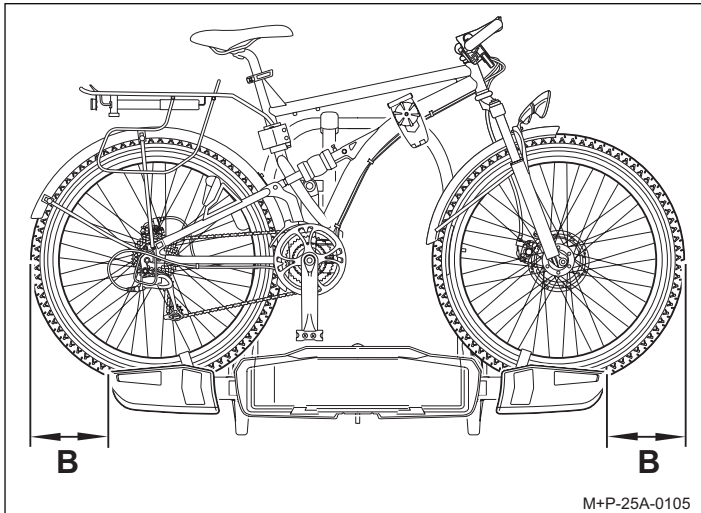
Mounting the third bicycle¹



The third bicycle is mounted in the same manner as the first. Note that the bicycles are mounted in opposite directions.

The third bicycle is attached to the second bicycle with the additional bracket (2).

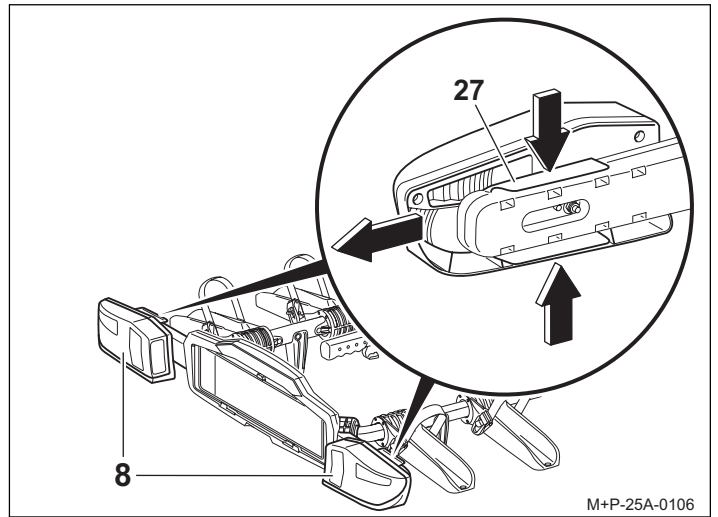
Adjusting the lamps



The distance (B) between the outer edge of the load and outer edge of the light emission surface on the tail light may be 15.7 inch (40 cm) at most. The tail lamps of the bicycle rack must be correspondingly positioned if required.

Note:

If the vehicle² is wider than the load, then the distance (B) between the outer edge of the vehicle² and the outer edge of the light emission surface on the tail light must be observed.



1. Press the locking mechanisms (27) together and slide the rear lamps (8) into the outer position. Release the locking mechanisms (27) and check that the rear lamps (8) are positioned securely.

Note:

The rear lamps (8) must be brought to the initial position before collapsing the bicycle rack.

Preparations before driving

WARNING

All screw connections and attachments of the bicycle rack and the bicycles must be checked before assembly, before every trip and during lengthy trips to ensure they are firmly seated and they must be retightened if necessary. This measure must be repeated at regular intervals regardless of the condition of the road. In addition, the lighting system must be checked to ensure it is working properly before every trip. If these instructions are not followed, the bicycle rack together with the mounted bicycles may come loose from the vehicle and cause injury to you or to other persons, or lead to an accident.

Attention:

The license plate and the lighting system of the bicycle rack must not be covered.

If the bicycle rack is not fully loaded, it must be ensured that:

- Brackets that are not in use are screwed closed and locked
- All keys are removed and stowed away
- The bracket for the third bicycle is stowed away
- The lashing straps of all wheel rails are closed.

Removing the bicycles

The bicycles are removed in the reverse order.

1. Hitch rack Uebler F32 for 3 bicycles (Order no. 15730)
2. without exterior mirrors

General safety instructions

The vehicle owner is responsible for assuring that his or her field of vision and hearing are not impaired by the load or the condition of the vehicle. It must be ensured that the vehicle and load are in accordance with the regulations and that vehicle road safety is not impaired by the load.

The required lighting and lighting systems must also be present and functional during daylight.

These Mounting and Operating instructions contain the general approval of the bicycle rack for trailer hitches and must always be kept in the vehicle when the rack is mounted.

Follow the legal regulations regarding use of the bicycle rack in the country of use.

WARNING

The operating steps and safety instructions described in these Mounting and Operating instructions must be adhered to.

The bicycle rack for the trailer hitch is only intended for transporting bicycles. The bicycle rack is not suitable for use on rough terrain.

All screw connections and attachments of the bicycle rack and the bicycles must be checked before assembly, before every trip and during lengthy trips to ensure they are firmly seated and they must be retightened if necessary. This measure must be repeated at regular intervals regardless of the condition of the road.

During the trip, the driver should check the bicycle rack for shifting/changes in position by glancing in the rear view mirror. If changes are noticed, proceed to the next possible stopping area at reduced speed and retighten the screw connections and attachments of the bicycle rack or bicycles.

If these instructions are not followed, the bicycle rack and /or the load may come loose from the vehicle and cause injury to you or to other persons, or lead to an accident.

WARNING

Do not use lubricants on the pre-mounted screw connections. This could cause screw connections to loosen and the bicycle rack together with the mounted bicycles may come loose from the vehicle; this may cause injury to you or to other persons, or lead to an accident.

WARNING

Before starting a trip, check that the lighting system is functioning properly. When the rear fog lamp on the bicycle rack is switched on, the rear fog lamp of the vehicle must be switched off, i.e. they may not be working simultaneously.

In vehicle models whose type approval was initially issued after 01 October 1998, the mounted rear rack system or the load must not cover the third brake lamp of the vehicle. The third brake lamp of the vehicle must be visible: on the left and right, relative to the longitudinal vehicle axis – at a horizontal angle of 10°; at the top, relative to the edge of the lamp – at a vertical angle of 10°; and at the bottom, relative to the lower edge of the lamp – at a vertical angle of 5°. If these values are not met, a "third" replacement brake lamp must be installed.

WARNING

The mounted bicycle rack and bicycles alter the driving and braking characteristics and the lateral wind sensitivity of the vehicle. A maximum speed of 80 mph (130 km/h) must not be exceeded.

Do not cover the bicycles with tarps, protective covers or similar since this greatly influences the areas exposed to the wind, and driving behaviour.

Slide any heavy cargo in the luggage compartment as far forward as possible to avoid excessively loading down the rear of the vehicle.

Always adjust your driving style to the road, traffic and weather conditions, and exercise special care when driving with a loaded bicycle rack.

WARNING

If the load extends more than 15.7 inch (40 cm) beyond the outer edge of the lit area of the side-marker lamps or tail lamps of the rear rack system, the load must be marked at most 15.7 inch (40 cm) from the edge and at most 59 inch (150 cm) above the road surface by a white lamp facing forwards and a red lamp facing rearwards.

Separately mark the bicycle wheels extending out laterally during transport.

When driving at night, cover the rear lights and reflectors of the bicycles to prevent confusion with the rearward-facing vehicle lighting and to avoid hindering or confusing other road users.

Attention:

If the vehicle is equipped with an electrical luggage compartment lid, allow for the necessary clearance when mounting the bicycle rack. If possible, the electrical luggage compartment lid should be de-activated and operated manually.

Remove the bicycle rack before using automatic car washes. Otherwise the bicycle rack, the vehicle and/or the car wash could be damaged.

Environmental protection notice

Remove the bicycle rack when not in use to lower fuel consumption.